

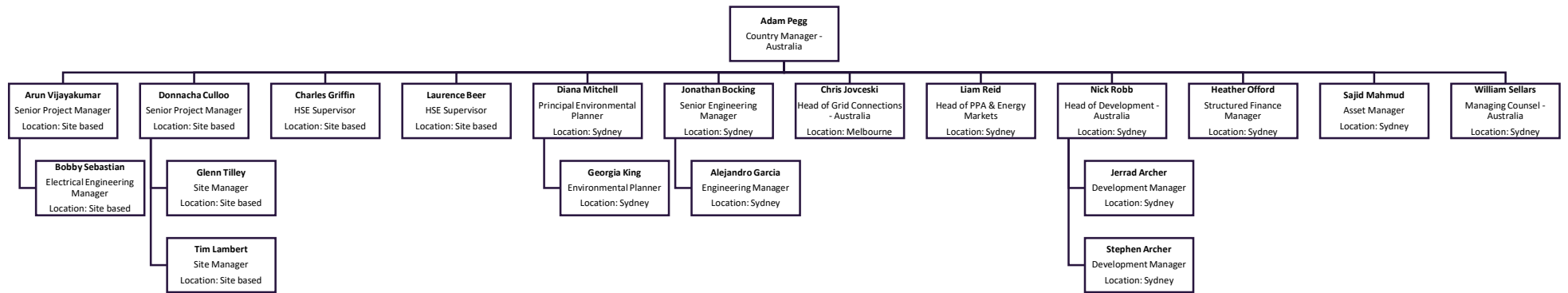
Capability and experience

Lightsource bp is a global leader in the development, financing and long-term operation of solar photovoltaic power projects. Lightsource bp operates the largest portfolio of utility scale solar in Europe with more than 3GW under management and has a 16GW global development pipeline across Europe, Middle East, Asia, North America and Australia. The company's track-record is well known within the global solar industry, having delivered numerous award-winning projects recognised as pioneering, innovative and best-in-class.

In 2019 bp acquired a 50% stake in Lightsource, forming a major strategic partnership strengthening the company's global market expansion. This investment translates into immediately available capital for project development, cross-functional strategic collaboration, and the backing of one of the world's largest energy companies with well-established brand equity.

In 2021, Lightsource bp announced our "25GW by 2025" target, setting the vision for Lightsource bp to become a leader in the energy transition.

Lightsource bp Australia – Organisational Chart



Project team profiles



Adam Pegg **Country Manager Australia**

Adam Pegg is Country Manager, Lightsource bp Australia since 2018 overseeing the company's renewable energy projects and investments in the Australian market.

He has over 20 years' experience working across renewable energy, power generation, gas infrastructure, energy retailing, corporate and project finance. Prior to joining Lightsource bp, Adam was Head of Business Development – Renewables at APA group for over eight years, where he established APA's wind and solar portfolio which grew to be one of the largest in the country. Adam managed APA's renewable energy strategy and investments, M&A opportunities, carbon liability and APA's input into federal carbon and renewable energy policy. Prior to APA Group, Adam held various roles at AGL Energy over a 6 year period in renewable energy, strategy, M&A, gas generation, energy retailing and corporate development.

Adam holds a Master of Business Administration from The University of New South Wales, a Post Graduate Diploma in Natural Resources and Environmental Economics from The University of Queensland and a Bachelor of Economics from The University of New England.



Nick Robb **Head of Development - Australia**

Nick has been with the company since its inception in 2010 amassing extensive solar engineering, project management and development experience in the UK, Ireland, Middle East and Australia. Nick heads the development of grid connected and behind-the-meter solar projects across Australia from origination through to financial close.

Prior to Lightsource bp, Nick worked in Victoria as a Project Engineer for Bilfinger Berger contracting to Powercor, CitiPower and AusNet.

Particular career highlights include being the Project Manager on the UK's first large-scale solar farm connected to the grid, leading the development of the UK's first floating solar farm, steering Lightsource bp's international expansion into Ireland, the Middle East, and more recently leading developments in Australia including the Wellington and Woolooga solar farms.

Nick has a Masters in Engineering Management and a Bachelor of Engineering from the University of Canterbury, New Zealand.



William Sellars
Managing Counsel – Australia

Will joined Lightsource bp in 2015. Will previously worked at international law firm Herbert Smith Freehills.

Will provides advice across a broad range of legal disciplines for developing, acquiring, financing, selling or restructuring solar projects, energy storage technology and smart systems. Through working on transactions across the UK, Ireland, USA, Australia, New Zealand, Egypt, Oman and Italy, Will has gained a breadth of international knowledge and experience in the renewables industry. Key transactions include:

- Growing the Australian business to reach financial close on over 500MWs and building a further pipeline of over 1GW
- Assisting with Lightsource selling a 43% shareholding to BP to become LSbp and specifically restructuring the Lightsource group of companies
- financing and refinancing over £500 million UK solar projects and developing numerous Feed in Tariff (FiT) and Renewable Obligation Certificate (ROC) based projects.
-

Will has the following professional qualifications:

- Bachelor of Laws and Bachelor of Business Management from the University of Queensland
- Graduate Diploma of Legal Practice from the Australian National University
- Member of the Queensland Law Society since 2010
- Currently studying a Masters of Business Administration at the University of Sydney.



Liam Reid
Head of Energy Markets

Liam joined Lightsource bp in 2020 to set up and grow its Australian energy markets capability, with a focus on customer-led origination of solar and battery related PPAs.

Liam has worked in the energy industry for over twenty years and has a background in engineering, science and business administration. Prior to joining Lightsource bp Liam has held commercial, strategic and finance roles at Alinta Energy, Deutsche Bank, Roaring40s, Infigen Energy, SIMEC Energy and FRV.

His experience includes working on solar and wind projects in Victoria including the Winton Solar Farm and the Cherry Tree Wind Farm, and renewable projects across Australia from Cape Grim (Tas) to Mackay (Qld), Wellington (NSW) to Geraldton (WA).

Liam has degrees from the University of Western Australia in Mechanical Engineering, Physics and Applied Mathematics and a Master of Business Administration from the Massachusetts Institute of Technology.



Diana Mitchell
Principal Environmental Planner

Diana joined Lightsource bp in mid 2019 to lead it's Australian planning team as their Principal Environmental Planner.

She has over 15 years' experience working in environmental planning on energy infrastructure projects, across both the private and public sectors. This includes roles at the NSW Independent Planning Commission (IPC), NSW Department of Planning, Industry and Environment (DPIE), QLD Department of Environment and Heritage Protection (DEHP), Ausgrid and Environment Resources Management (ERM). Some of the recent renewable energy projects she has worked on in Australia include:

- Woolooga Solar Farm, QLD
- Mokoan Solar Farm, VIC
- West Wyalong Solar Farm, NSW
- Wellington North Solar Farm, NSW
- Wellington Solar Farm, NSW
- Yarrabee Solar Farm, NSW
- Liverpool Range Wind Farm, NSW
- Bango Wind Farm, NSW
- Rye Park Wind Farm, NSW

Diana has a Bachelor of Science from the University of Wisconsin and a Master of Science and Technology from the University of New South Wales. She is also a member of the Planning Institute of Australia (PIA), Environment Institute of Australia and New Zealand (EIANZ) and International Association of Public Practitioners (IAP2).



Chris Jovceski
Head of Grid Connection

Chris joined Lightsource bp at the beginning 2019 as its Australian Head of Grid Connections.

Chris has worked in the energy industry for nearly twenty years, with a back ground in power systems, planning and grid engineering. Prior to Lightsource bp, Chris has worked as a Grid Connections manager at Goldwind, an electrical/grid engineer at Acciona, a grid engineer at Suzlon and multiple technical roles within NEMMCO (now AEMO).

Chris has worked on a number of renewable energy projects across the National Electricity Market (NEM), such as the Oaklands Hill Wind Farm (VIC), Mt Gellibrand Wind Farm (VIC), Moorabool Wind Farm (VIC), White Rock Wind and Solar Farm (NSW) Mortlake South Wind Farm (VIC) Hallet Hill Wind Farm (SA), Snowtown Wind Farm (SA), Bluff Wind Farm (SA), Wellington Solar Farm (NSW).

Chris has a degree in Electrical and Electronic Engineering from Victoria University of Technology



Heather Offord
Structured Finance Manager

Heather joined Lightsource bp in 2013, as a development manager for utility scale solar PV assets in the UK. She now runs the Australian structured finance department in Sydney, managing the debt and equity fundraising process for Lightsource bp's Australian assets.

Previously Heather worked at Centrica Energy, the UK integrated energy company, in their power procurement and gas origination team, securing long term agreements for the company's downstream business – British Gas.

Heather has worked on some of Lightsource bp's most notable transactions and projects to date, including the largest ever sterling-denominated green bond (USD 353M) and a USD 1 billion investment partnership with BlackRock Real Assets.

Heather also led the financing transactions for the company's first Australian assets; Wellington (200MW in NSW), Woolooga (214MW in QLD) and West Wyalong (107MW in NSW), securing over AUD 500M in debt funding.

Heather graduated from the University of Exeter in 2011 with a degree in Mathematics.



Arun Vijayakumar
Senior Project Manager (Construction)

Arun joined Lightsource bp in 2017 as Lead Project Manager for the projects in Asia Pacific. He has a very rich global experience in Project Management and Construction Management of large-scale solar farms and had delivered more than 1 GW of Projects from Concept to Commercial Operation across the globe. He currently manages 215 MWp Woolooga Solar Farm in Queensland Australia.

Previously Arun worked in Fortune 500 companies like Belectric, SunEdison, ABB, Vedanta and had delivered high complex solar projects in the Asia Pacific since 2014 and managed project value of more than 1 billion dollars.

Arun has degree in Electrical and Electronics Engineering and graduated from SRM University, Chennai (India)



Donnacha Culloo
Senior Project Manager (Construction)

Joining Lightsource bp in 2019, Donnacha (Don) brings a variety of experience that has been accrued throughout Ireland and Australia in a career stretching over eighteen years throughout a broad-base of construction disciplines which includes renewables, utilities, mining production, mine rehabilitation, commercial construction, residential, civil and industrial.

With a proven track record in leadership, management supervision, contract management, budget management, and technical engineering skills, Don has ensured that the workforces, contractors and suppliers that he's responsible for have delivered projects safely, on time, to design and within budget constraints.

Don's ability to forge strong relationships with all key project stakeholders ensure that relationships are developed, maintained and last long after project completion.

Don is currently managing the 200MW Wellington Solar Farm (NSW) and 107MW West Wyalong Solar Farm (NSW).

Don holds a Bachelor's Degree in Construction Management and Engineering and a Diploma in Project Management.



Sajid Mahmud
Asset Manager

Sajid joined Lightsource bp in early 2021 as the Asset Manager for Lightsource bp's Australian assets.

Sajid's role is to manage all operational aspect of the asset throughout the project's lifecycle. This includes asset Performance, Operation, Finance, Off-take, Regulatory, Health & Safety and Contractor Management. Sajid brings over 10 years of experience on solar, battery and power systems operation, maintenance and asset management. He is currently managing the 200MW Wellington solar farm with 107MW West Wyalong and 214MW Woolooga solar farm to be handed over to him in 2022. Prior to this, Sajid worked at AGL Energy as the lead asset manager where he managed a large portfolio of more than 500 commercial assets accumulating to almost 100MW.

Sajid holds a Bachelor of Electrical and Computer Systems Engineering from Monash University Malaysia and is also a CEC Accredited Solar Designer.



Jonathan Bocking
Senior Engineering Manager

Jonathan joined Lightsource bp in September 2019 as Principal Engineer for Australia to help lead the technical aspects of projects under development and during delivery.

Jonathan is a Solar PV Engineer with over 15 years' experience in the commercial, industrial, and utility PV sectors in Australia. He has worked for equipment manufacturers, contractors, and developers in all phases of large solar projects including site selection, resource assessment, yield modelling, technology selection, conceptual design, grid connection, detailed design, commissioning and performance analysis. He has a broad understanding of all the major engineering disciplines required for developing and building solar projects especially electrical, mechanical and control systems and has a keen interest in solar generation forecasting and electricity market operations.

Jonathan has helped deliver over 15 utility scale solar projects totalling more than 1.5 GW, most recently including The Wellington Solar Farm (200MW), Woolooga Solar Farm (214MW) and West Wyalong Solar Farm (107MW).

Jonathan has a Bachelor of Engineering in Photovoltaics and Solar Energy from the University of New South Wales and is a CEC Accredited Solar Designer.



Alejandro Garcia
Engineering Manager

Alejandro joined Lightsource bp in April 2021 to support the commercial engineering team focused on the technical element of solar and battery projects.

Alejandro has worked in the energy industry for over eleven years and has a background in environmental science and engineering. Prior to joining Lightsource bp Alejandro has held engineering roles at Siemens Gamesa, RCR, Todae Solar and Solarcentury.

His experience includes working on solar projects in the UK, Europe, Latin America and Australia: Emerald (80MW in QLD), Greenough River Solar Farm Stage 2 (40MW in WA), Haughton (120MW in QLD), Gilgandra (60MW in NSW) and Sebastopol (100MW in NSW).

Alejandro has a Masters Degree in Environmental Science and Management from the University Rey Juan Carlos (Spain).



Georgia King
Environmental Planner

Georgia joined Lightsource bp in December 2019 as a Graduate Environmental Planner, and now works across environmental planning and project development in Lightsource bp's Australian team.

Prior to joining Lightsource bp, Georgia worked at the NSW Department of Planning Industry and Environment (DPIE), where she worked in both planning policy and environmental assessments of solar and wind projects.

Since joining Lightsource bp, Georgia has worked on solar projects across Australia, from early-stage development through to construction. Some recent examples include West Wyalong Solar Farm (107MW, NSW), Mokoan Solar Farm (51MW, VIC) and the recently acquired West Mokoan Solar Farm (367MW, VIC) and Wunghnu Solar Farm (90MW, VIC).

Georgia graduated from the University of New South Wales in 2019 with a Bachelor of Planning (Honours). She is also a member of the Planning Institute of Australia (PIA) and the Environmental Institute of Australia and New Zealand (EIANZ).

